



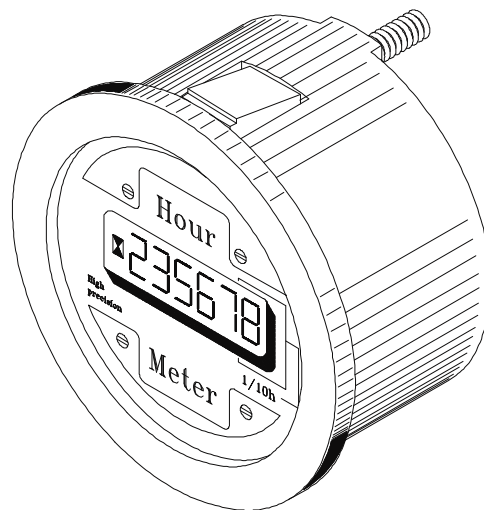
elektrosistem



DIGITAL HOUR METER

HCD-12/48

HCD-48/144



Elektrosistem's DC hour meters make use of a new technology based on a permanent eeprom memory and running without batteries.

This system is used for military applications and has two main advantages: high reliability and compact size.

The extreme versatility of the instrument allows applications in the various industrial fields: handling, battery vehicles, nautical industry.

The hour meter is available in two models: "with continuous counting" or "with controlled counting" with operating voltage from 12V to 144V.

OPERATION "with continuous counting"

- When the hour meter is connected to the battery it starts counting and displays the total number of hours stored.
- When voltage is supplied to the hour meter, the hourglass on the display flashes, indicating that it is counting hours.
- All data are stored in the permanent memory of the indicator even when voltage is interrupted.

OPERATION "with controlled counting"

- When the indicator is connected to the battery it displays the total number of hours stored but it does not start counting.
- The hourglass does not flash.
- It is necessary to connect the wire (white for positive control and yellow/black for negative control) to start counting.
- The hourglass starts flashing and the hour meter starts counting until the wire is disconnected.
- In this way it is possible to stop the hour meter counting without interrupting the voltage.
- All data are stored in the permanent memory of the indicator even in case of voltage interruption.

Technical features might be modified without notice.

TECHNICAL SPECIFICATIONS

Reading capacity	99999.9
Resolution	0.1 hours
Precision	±0.04 % (from -40 °C to +85 °C)
Max. absorbed current	1 mA
Operating temperature	from -40 °C to +85 °C
Storage temperature	from -50 °C to +90 °C

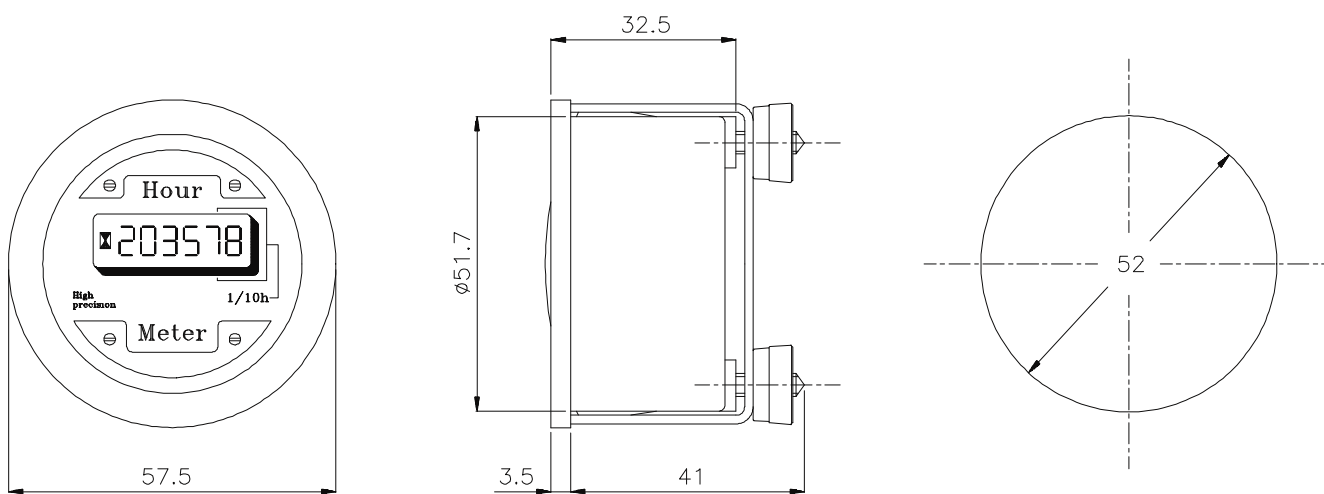


MODELS

Model	12V	24V	36V	48V	60V	72V	80V	96V	120V	144V
HCD-12/48	•	•	•	•						
HCD-48/144				•	•	•	•	•	•	•

Both models are available without control, with positive or negative control and with both controls.

DIMENSIONS



WIRING DIAGRAM

